

TECHNICAL DATA SHEET

VALVE DESIGNATION CODES

83 series valve

Identifier

VA = Valve

Valve series

83

Engagement Type

A = Air
 C = Cable
 D = Electric / Air 12v
 F = Electric / Air 24v
 K = Manual
 L = Lever

Pressure setting (bar)

120 = 120 bar (1740 psi)
 140 = 140 bar (2030 psi)
 172 = 172 bar (2500 psi)
 210 = 210 bar (3000 psi)

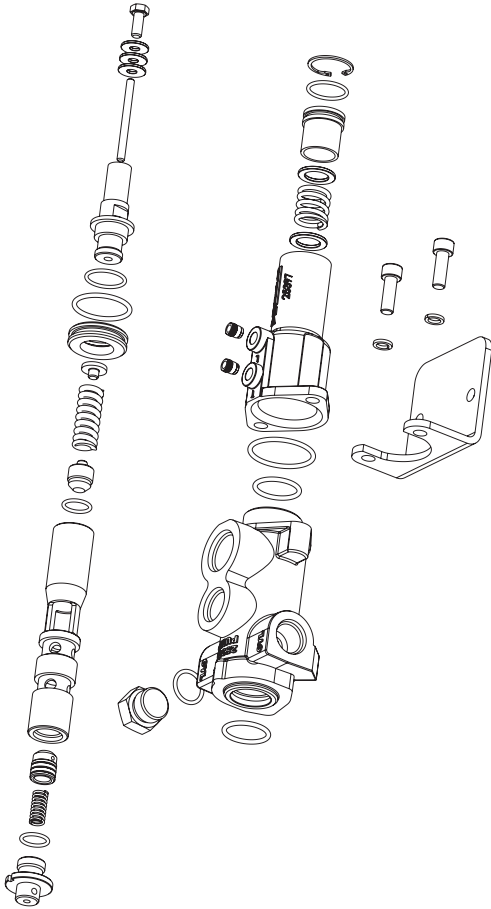
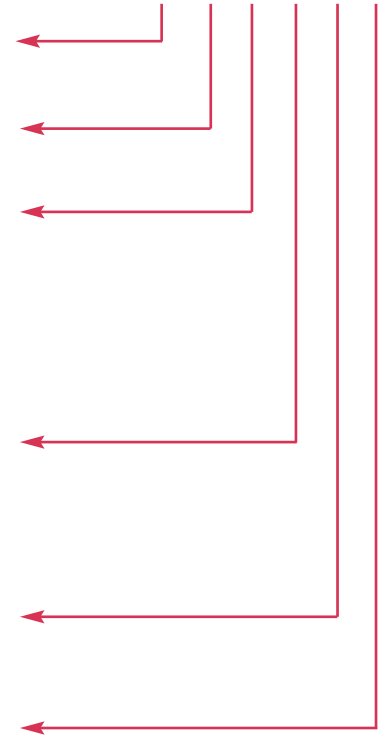
Dampening

A = No
 B = Yes

Manufacturers Code

(internal use only, if required)

VA 83 A 140 A 02

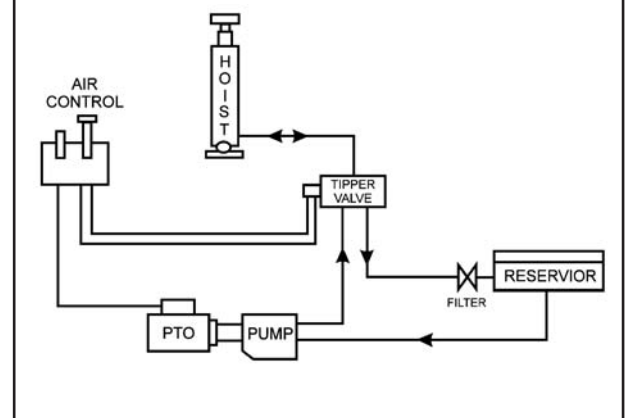


For full details refer to owner's manual

Technical Data

Flow	The pressure differential in the raise position is 780 kPa (113 psi) at 150 l/min (40 USgpm) flow rate. The pressure differential in the lower or dump position is 480 kPa (70 psi) at 225 l/min (60 USgpm) flow rate.
Maximum Pressure	The maximum working pressure is 210 bar (3000 psi). The relief valve setting is adjustable down to 70 bar (1000 psi).
Port Sizes	Pump Port - 1 1/16" - 12 UN'O' Ring Cylinder Port - 1 1/16" - 12 UN'O' Ring Tank Port - 1 5/16" - 12 UN'O' Ring
Approximate Bare Mass	Series VA83A - 5.1 kg (11.2 lb) Series VA83K - 4.2 kg (9.3 lb)

Typical Flow Diagram



Notes: • Powauto recommends the use of filtration in all hydraulic circuits to a maximum of 25µ.

Spare parts:	Seal Kit: (Dampened)	SK 021
	Seal Kit: (Non-dampened)	SK 017
	Seal Kit: (Cable)	SK 016

TECHNICAL DATA SHEET



AIR CONTROLLED THREE POSITION HYDRAULIC SPOOL VALVE WITH DAMPENING

The 83 Series valve is a bracket mounted, pressure balanced single spool valve, for control on hoist tipping applications.

Used in conjunction with a proportional air control (e.g. CK90A or C) the valve controls the rate of lowering when the dampened model (see over) is ordered.

SUITS:

Truck hoist applications
Truck and trailer applications

83 SERIES HYDRAULIC HOIST VALVES

PRODUCT FEATURES

- **HARD CHROME SPOOLS**
For longer duty and life.
- **SUPERFINE SPOOL AND HOUSING TOLERANCES**
Providing minimum loss of pressure through the valve
- **DAMPENED VALVE**
Allows slow lowering of the hoist

DEALER: