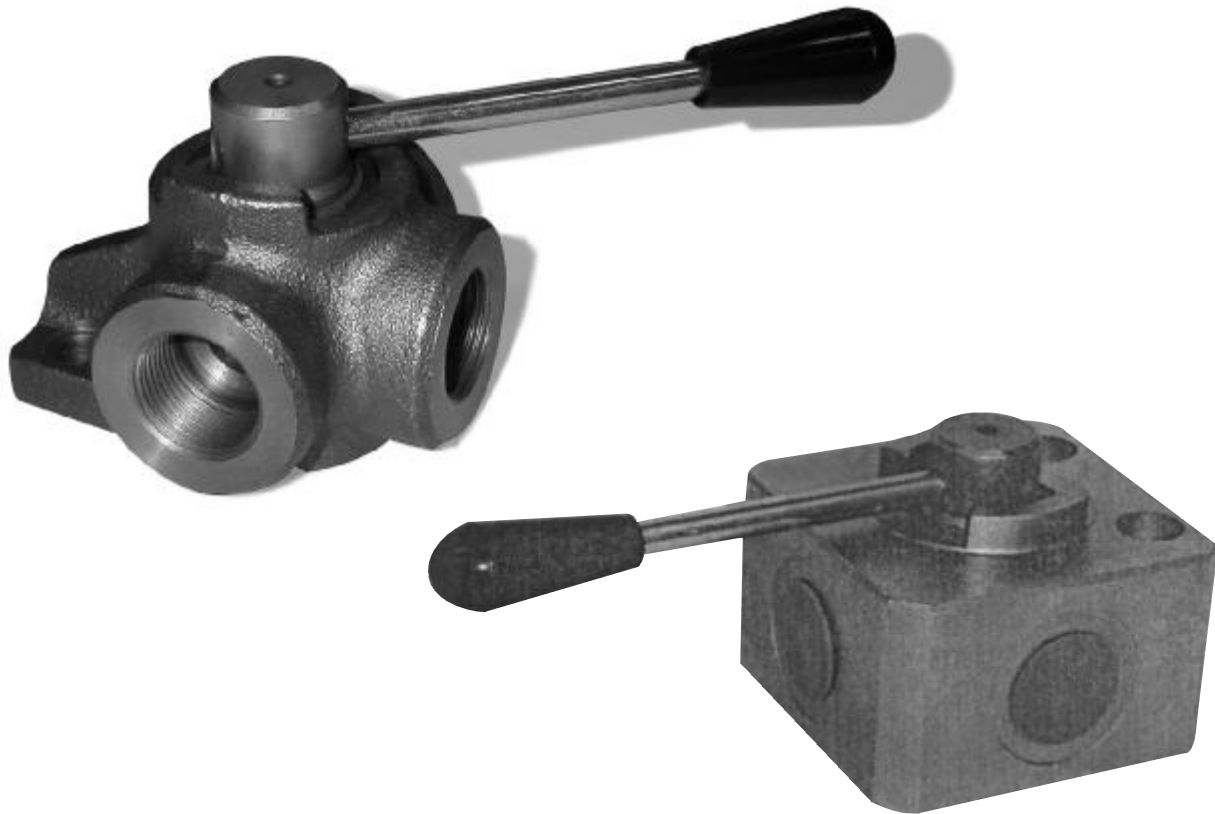


TECHNICAL DATA SHEET



MANUAL DIVERTER VALVE

Ideal for low to medium flow diversion in medium or high pressure systems,

This valve provides a low cost alternative to an air-operated truck hydraulic system.

Simple to operate this valve opens both systems during transition to prevent pressure spikes in operation.

PRODUCT FEATURES

- **HIGH PRESSURE CAPACITY (HP DESIGNATOR)**
Suitable for tipper, winch, cranes (up to 350 bar)
- **COMPACT DESIGN**
Minimum space required for installation
- **EASY TO INSTALL**
Low installation costs
- **SIMPLE DESIGN**
Low maintenance

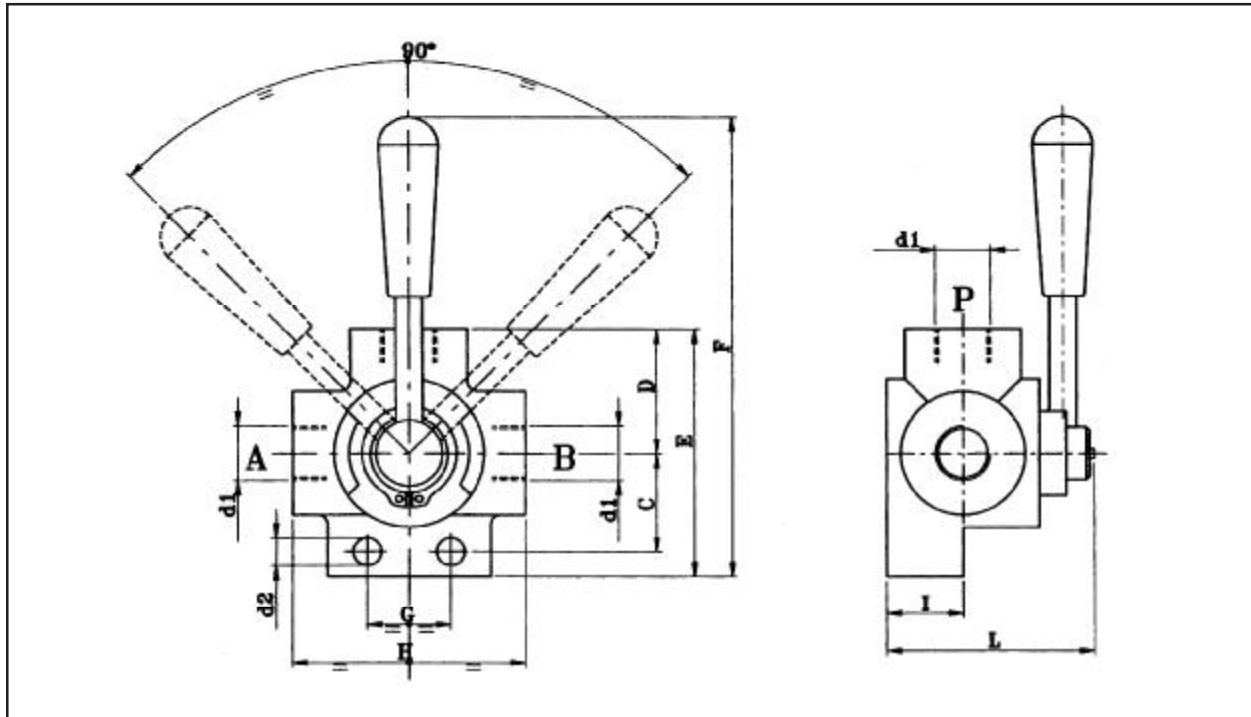
DEALER:

D3V SERIES

HYDRAULIC DIVERTER VALVE



TECHNICAL DATA SHEET



Model	Max Flow (l/min)	Max Pressure (bar)	d1	d2	C	D	E	F	G	H	I	L
D3V-1/2	80	250	G1/2	8.5	36	43	96	173	30	85	24	70
D3V-3/4	120	220	G3/4	10.5	41	47	101	179	32	91	28	80
D3V-1	180	220	G1	10.5	50	51	115	194	32	98	32	90
D3V-1/2 HP	90	350	G1/2	11	27.5	40	80	165	30	80	38	71
D3V-3/4 HP	120	350	G3/4	11.5	30	45	90	169	32	90	44	80
D3V-1 HP	180	320	G1	11	38	53	106	217	60	106	53	88

