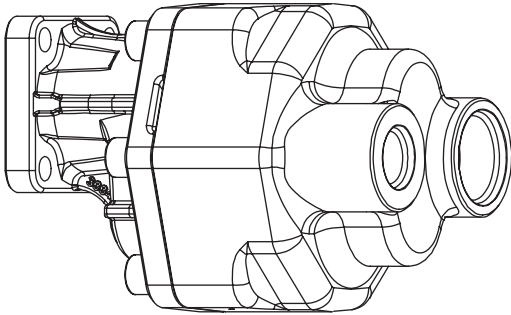


TECHNICAL DATA SHEET

PUMP DESIGNATION CODES

POW series pump

POW 0 90 *

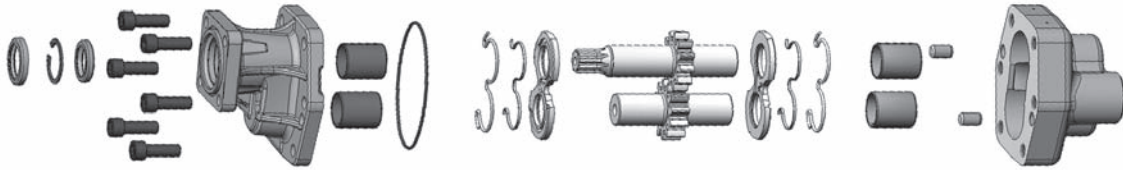
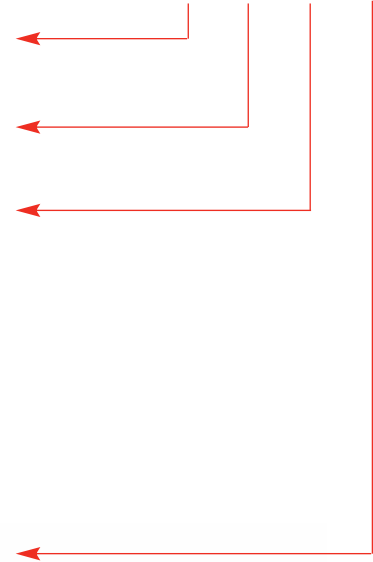


Pump Series
POW

Rotation
O = Opposite to engine
S = Same as engine

Flow @ 1000 RPM
25 = 23 l/min (6.0 g/min)
35 = 34 l/min (9.0 g/min)
45 = 44 l/min (11.6 g/min)
55 = 54 l/min (14.3 g/min)
65 = 64 l/min (16.9 g/min)
75 = 74 l/min (19.5 g/min)
90 = 88 l/min (23.2 g/min)
115 = 113 l/min (29.9 g/min)

Manufacturers Code
(internal use only, if required)

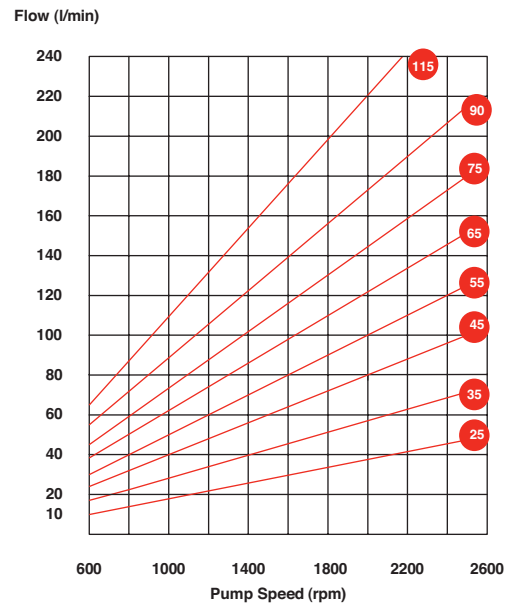


Technical Specifications

Pump Size

POW Series Pump Ratings	25	35	45	55	65	75	90	115
Pump flow Rates @ 1000 RPM @ Max. Pressure								
l/min	19.0	28.0	40.0	50.0	62.0	72.0	87.0	110
USgpm	5.0	7.4	10.6	13.2	16.4	19.0	23.0	29.0
@ 2000 RPM @ Max. Pressure								
l/min	38	56	80	100	124	144	174	220
USgpm	10.0	14.8	21.2	26.4	32.8	38.0	46.0	58.1
Pressure Ratings								
bar	310	300	290	280	280	270	250	230
psi	4495	4350	4200	4060	4060	3915	3625	3335
Operating Speeds (See graph)								
Min Operational	600 rpm							
Max Continuous	2000 rpm							
Max Intermittent	2500 rpm							
Minimum Suction Line Inside Diameter	(32 mm) (1 1/4" in)				(40mm) (1 1/2" in)			
Pump Port Sizes								
Inlet	1 5/16" 12UN O-Ring				1 7/8" 12UN O-Ring			
Outlet	1 1/16" 12UN O-Ring				1 5/16" 12UN O-Ring			
Approx. Bare Mass								
Kg	10.0	11.0	11.5	12.2	13.0	13.2	14.5	16.0
lb	22.0	24.2	25.3	26.8	28.6	29.0	31.9	35.2
Seal kit	SK077							
Overall Length								
mm	183	191	198	206	213	220	230	248

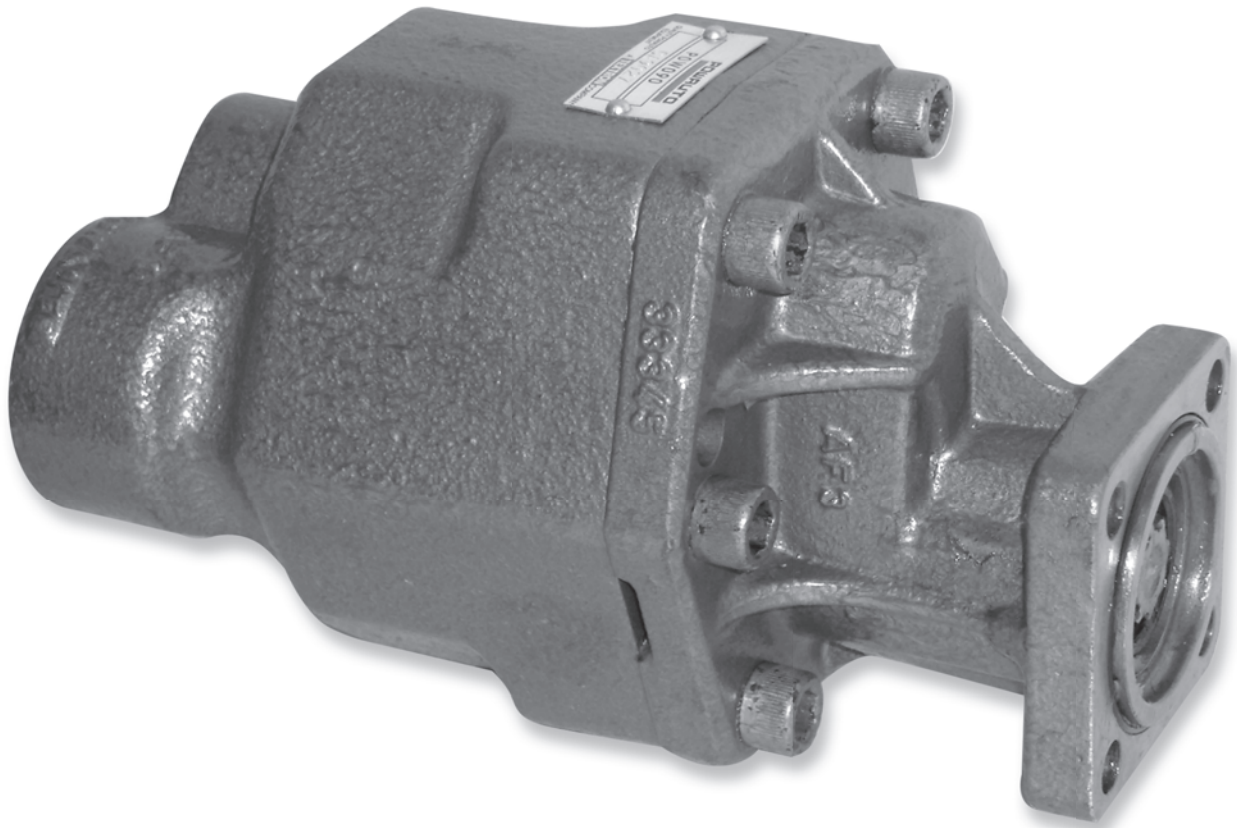
Representative Performance Data



For full details refer to Powauto or consult your applications book.

Note: Powauto recommends the use of filtration (min 25µ) in your hydraulic system. Warranty void if pump seal removed.

TECHNICAL DATA SHEET



HIGH PRESSURE GEAR PUMPS

The POW Series pump is for applications requiring high pressure & flow. The design of the POW pump is maximised for performance and flow.

Manufactured from rugged SG iron this product is well suited to high pressure applications such as cranes, aerial platforms, hook-lift loaders and garbage compactors.

SUITS:

Heavy duty and high pressure applications
(Cranes, Hook-lifts)

POW SERIES HYDRAULIC GEAR PUMP

PRODUCT FEATURES

- **HIGH PRESSURE (UP TO 310 BAR)**
For maximum performance of hydraulic systems
- **AVAILABLE WITH REAR PORTS**
To enable better placement of hydraulic lines
- **EXPANDED RANGE**
For a greater application coverage
- **STRONGER YET LIGHTER**
Designed for maximum performance

DEALER: