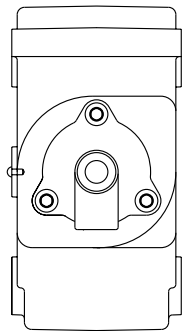
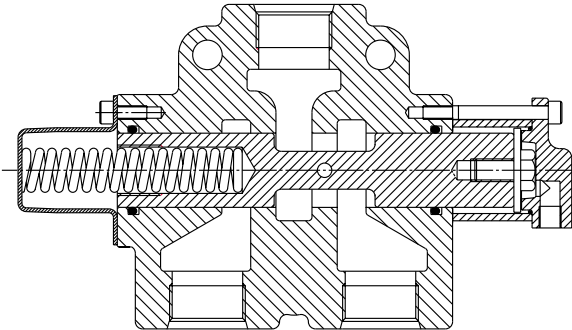


TECHNICAL DATA SHEET

VALVE DESIGNATION CODES

86 series valve

VA 86 A

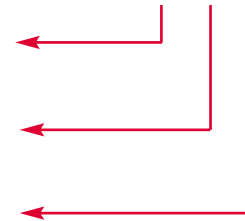


Identifier
VA = Valve

Valve series
86

Engagement Type
A = Air
B = Lever
C = Cable
D = Electric / Air 12V
E = Electric / Air 24V

Maximum Working Pressure
172 Bar (2500 psi)



For full details refer to owner's manual

Technical Data

Flow:	189 l/min (50 USgpm). (With spool in any positions the oil passageway within the valve is equivalent to a 1" diameter hose or pipe.)
Port Sizes:	1 5/16" 12UN O-Ring
Approximate Bare Mass:	Series 86C - 7.1 kg (15.7 lb) Series 86A - 7.8 kg (17.2 lb)

Note: Powauto recommends the use of filtration in all hydraulic circuits (25µ).

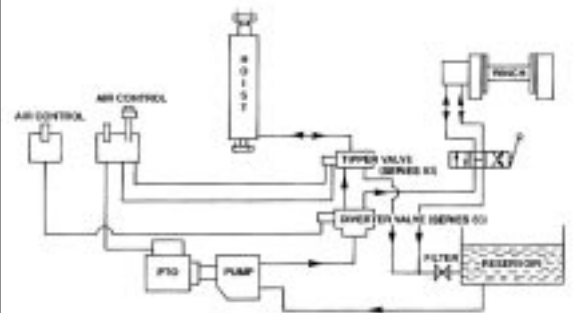
- Do not exceed maximum working pressures.

Spare parts:

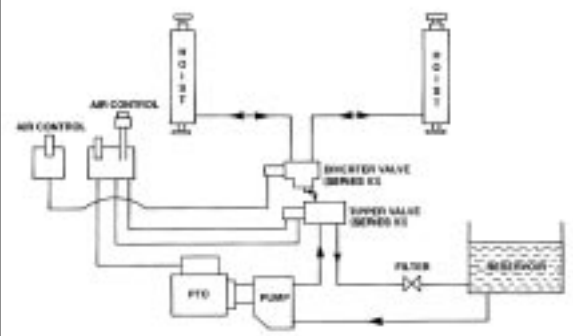
Seal Kit:

SK050

Hoist & Winch System Diagram



Hoist & Dual System Diagram



TECHNICAL DATA SHEET



THREE WAY - TWO POSITION DIVERTER VALVE

The 86 Series valve is used to direct oil flow from between two hydraulic applications.

This valve is used extensively in "truck and dog" applications for tipping both the front and rear trailers.

Use this valve in conjunction with a dual control (e.g. CK113 or CK114).

SUITS:

Truck and trailer applications
Winch and hoist applications

86 SERIES

HYDRAULIC DIVERTER VALVES

PRODUCT FEATURES

- **HARD CHROME SPOOLS**
For longer life.
- **LARGE PORTS AND SPOOL PASSAGES**
For maximum flow with minimum pressure drop across the valve.
- **SIMPLE DESIGN**
For trouble free operation and installation.

DEALER: