

TECHNICAL DATA SHEET



SAE 8 BOLT HEAVY-DUTY PTO

Developed for trucks having ancillary equipment obstruction the PTO area, the 856 series PTO is suitable for Eaton and Mack transmission 8 bolt openings.

This PTO has a high torque rating and good speed, making it ideal for most transport applications.

New airshift assembly arrangement provides problem free engagement over the PTO life.

Available with many output options to suit your requirements.

856 SERIES

POWER TAKE-OFF

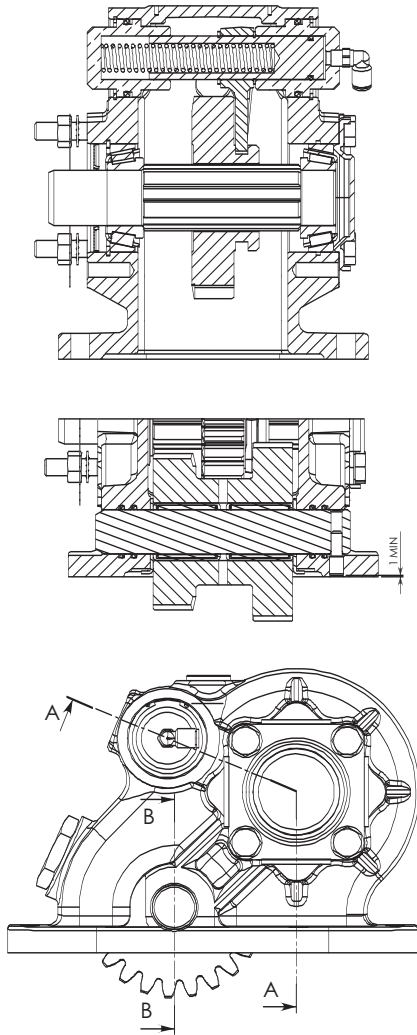
PRODUCT FEATURES

- **INTEGRAL AIR SHIFT**
Stronger/more robust design
- **HOBBED & SHAVED GEARS**
Quieter operation
- **VITON SEALS & O-RINGS**
Greater durability at high operating temperatures and with synthetic oils
- **DOUBLE O-RING SEALS**
Greater leak prevention
- **ACCESS HOLE FOR CHECKING BACKLASH**
Ease of installation

DEALER:

TECHNICAL DATA SHEET

PTO DESIGNATION CODES 856 series PTO



PA 856 B L11 A 08 *

Identifier
PA=PTO side mount

PTO series
856

Gear Type
B,X

Build
L = Left side of transmission
1 = Selector to top/Bias to bottom
2 = Selector to bottom/Bias to top
1 = Centre to front } Position of gear
3 = Front to centre } in transmission

Engagement Type
A = Air

Output Type
08 = 8T Powauto Hydraulic Spline
09 = 14T 12/24 30° Spline + 35 x 60 Flange
10 = 14T 12/24 30° Spline + 1310 Series Flange
11 = 14T 12/24 30° Spline + 1410 Series Flange
13 = 13T SAE B Hydraulic Spline + Mount
14 = 13T SAE B Hydraulic Spline
23 = 8T ø36 DIN 5462 Spline Female

Manufacturers Code
A = With pressure switch
B = With mounting kit
C = With mounting kit & PTO control kit

For full details refer to owners' manual.

Technical specifications	PTO Type
Rating for intermittent duty	856
Torque (Nm/ft lb)	466/343
Power @ 500 rpm output shaft (kW/hp)	24.4/32.6
Power @ 1000 rpm output shaft (kW/hp)	48.7/65.3
Output Shaft Rotation	Opposite
Mass (kg/lb)	17/31.4
Mounting kit	MK081, MK082, MK084*
Refer to application manual for full output speed details	

* Mounting kit varies with transmission - refer to application manual.

Spare parts: Seal Kit: Seals & gaskets (minor overhaul) SK073
Bearing Kit: Bearings/seals and gaskets (major overhaul) BK073
Mounting Gasket Kit: GK002

Gears and body sold separately.