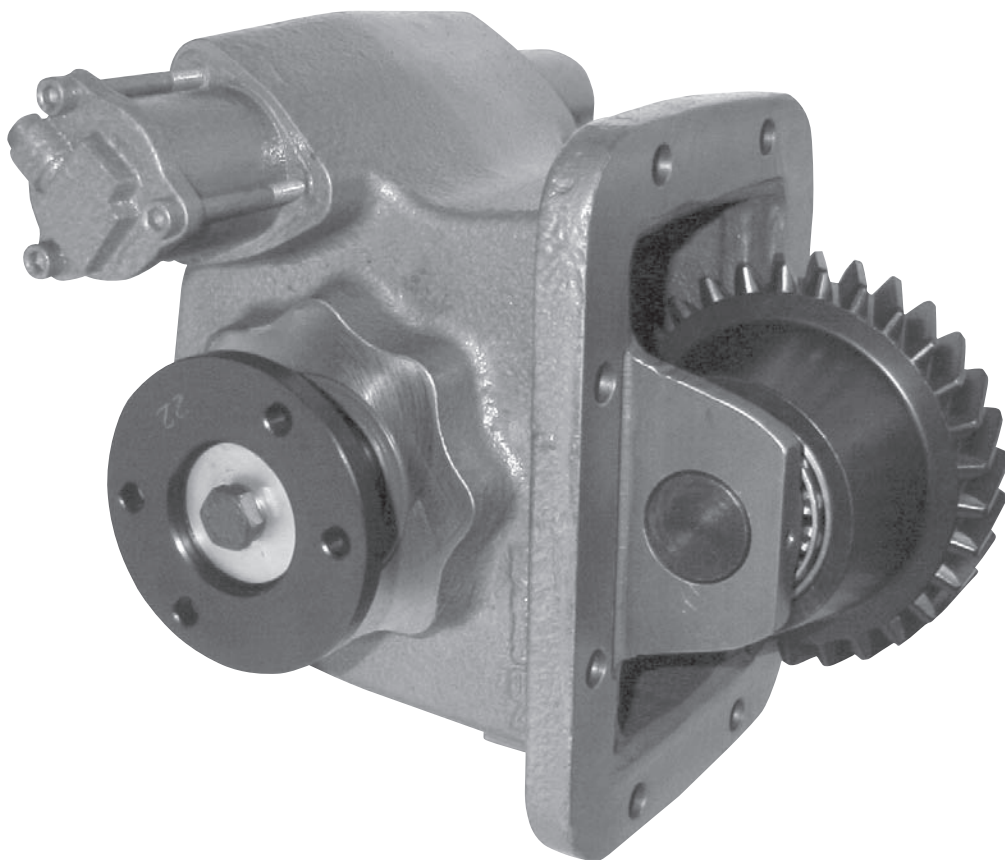


# TECHNICAL DATA SHEET



## **EXTRA LOW RATIO AIR SHIFT POWER TAKE-OFF**

The 381 series power take-off is a single reduction PTO designed for Isuzu MLD transmissions with an 8 bolt PTO opening

Continuing Powauto's commitment to maximum torque density this PTO achieves superior strength with minimum size and cost penalty.

### **SUITS:**

Certain Isuzu transmissions

## **381 SERIES POWER TAKE-OFF**

### **PRODUCT FEATURES**

#### **BETWEEN 0.58 AND 0.82:1 RATIO**

To allow maximum torque for pump operation

#### **AIR SHIFT OPERATED**

For ease of engagement

#### **A RANGE OF OUTPUTS**

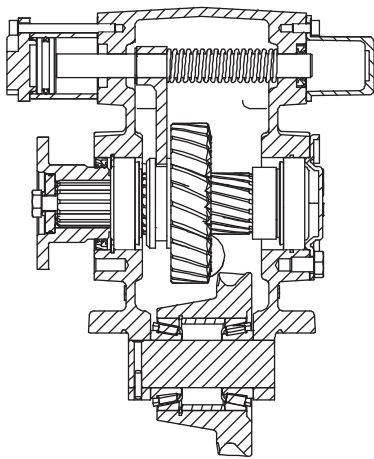
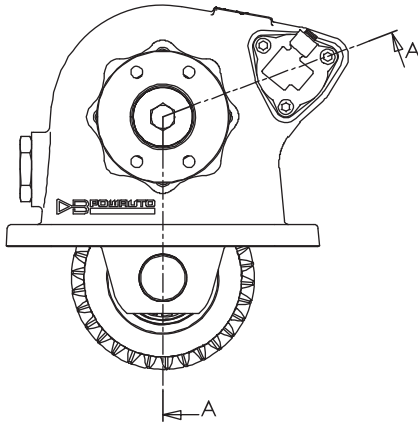
To allow close coupling or remote mounting of the pump

#### **TAPERED ROLLER BEARINGS**

Higher torque capacity

**DEALER:**

# TECHNICAL DATA SHEET



## PTO DESIGNATION CODES

### 381 series PTO

**PA 381 SE L11 A 13 \***

#### Identifier

PA = PTO Side mount

#### PTO series

381

#### Gear Type

SE

#### Build

L = Left side of trans

1 = Selector to top

1 = Centre to front - Position of gear in transmission

#### Engagement Type

A = Air

D = Electric / Air 12V

E = Electric / Air 24V

#### Output Type

08 = 8T Powauto Hydraulic Spline

09 = 14T 12/24 30° Spline + 35x60 Flange

10 = 14T 12/24 30° Spline + 1310 Series Flange

11 = 14T 12/24 30° Spline + 1410 Series Flange

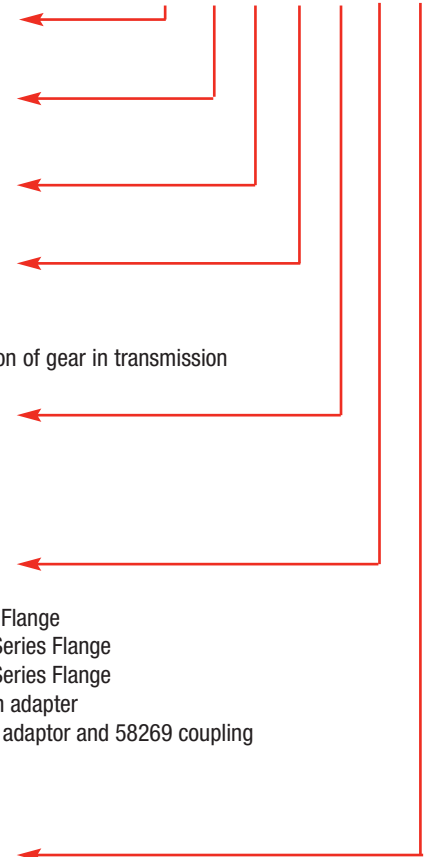
13 = 13T SAE B Hydraulic Spline with adaptor

23 = 14T 12/24 30° Spline + 85226 adaptor and 58269 coupling

#### Manufacturers Code

A = With pressure switch

B, C etc. (internal use only, if required)



For full details refer to owner's manual

## Technical Specifications

### Rating for intermittent Service

Torque (Nm / lb ft)	415/306
Power @ 500 rpm (kW / hp)	22/29
Power @ 1000 rpm (kW / hp)	43/58
Output Shaft Rotation	Opposite
Approximate Bare Mass (kg / lb)	14.5/31.8
Mounting Kit	MK1176A

**For full details refer to your Powauto distributor**

#### Spare parts:

Seal Kit:

Bearing Kit:

Mounting Gasket Kit:

Seals & gaskets (minor overhaul)

Bearings/seals and gaskets (major overhaul)

*Gears and shafts sold separately*

SK076

BK076

GK020